

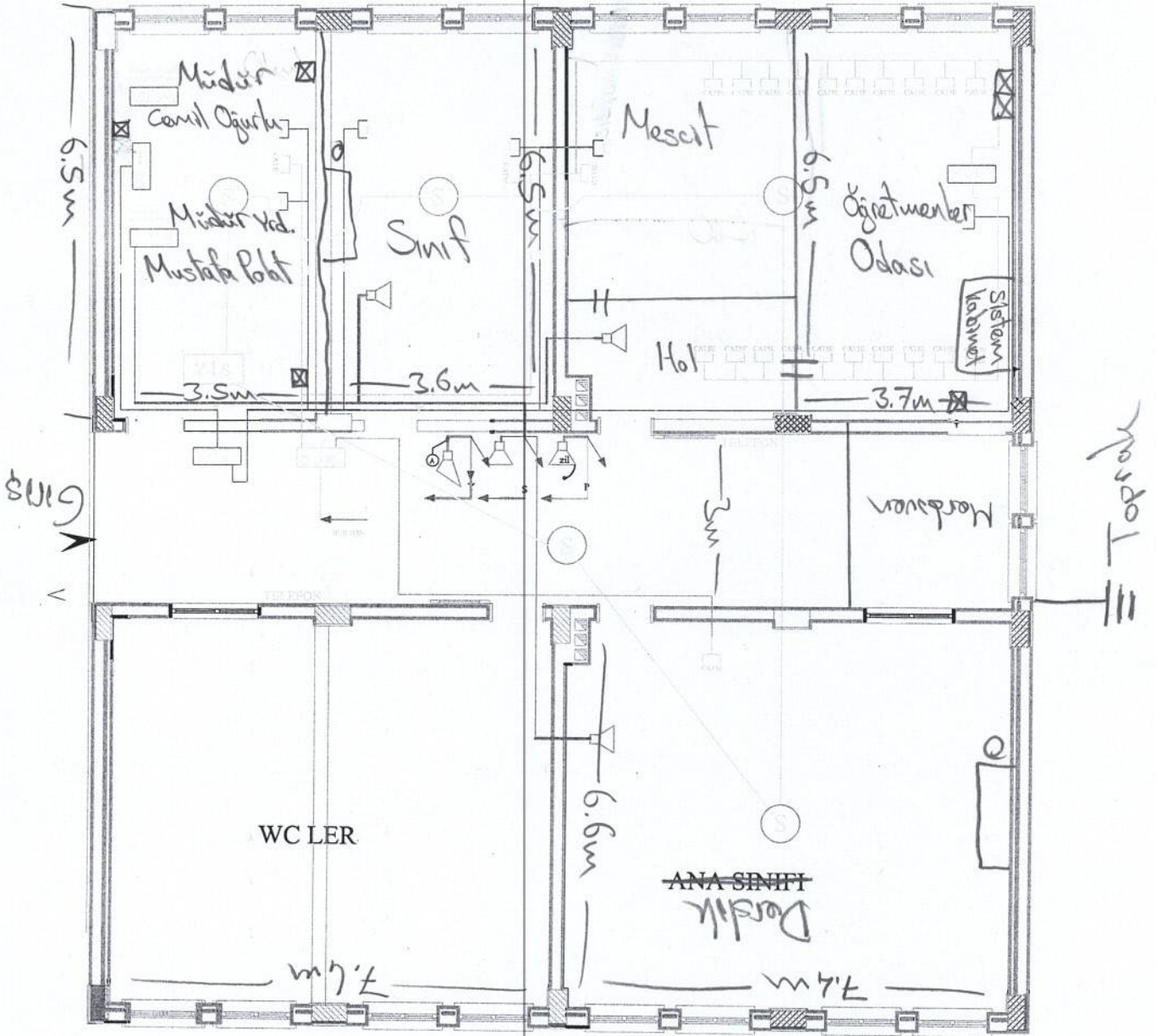
Bohrum



- 5



# Zemin Kat



Yerden kırış → 2.5m  
Yerden tavan → 2.3m  
Kırışlar arası → 3.5m

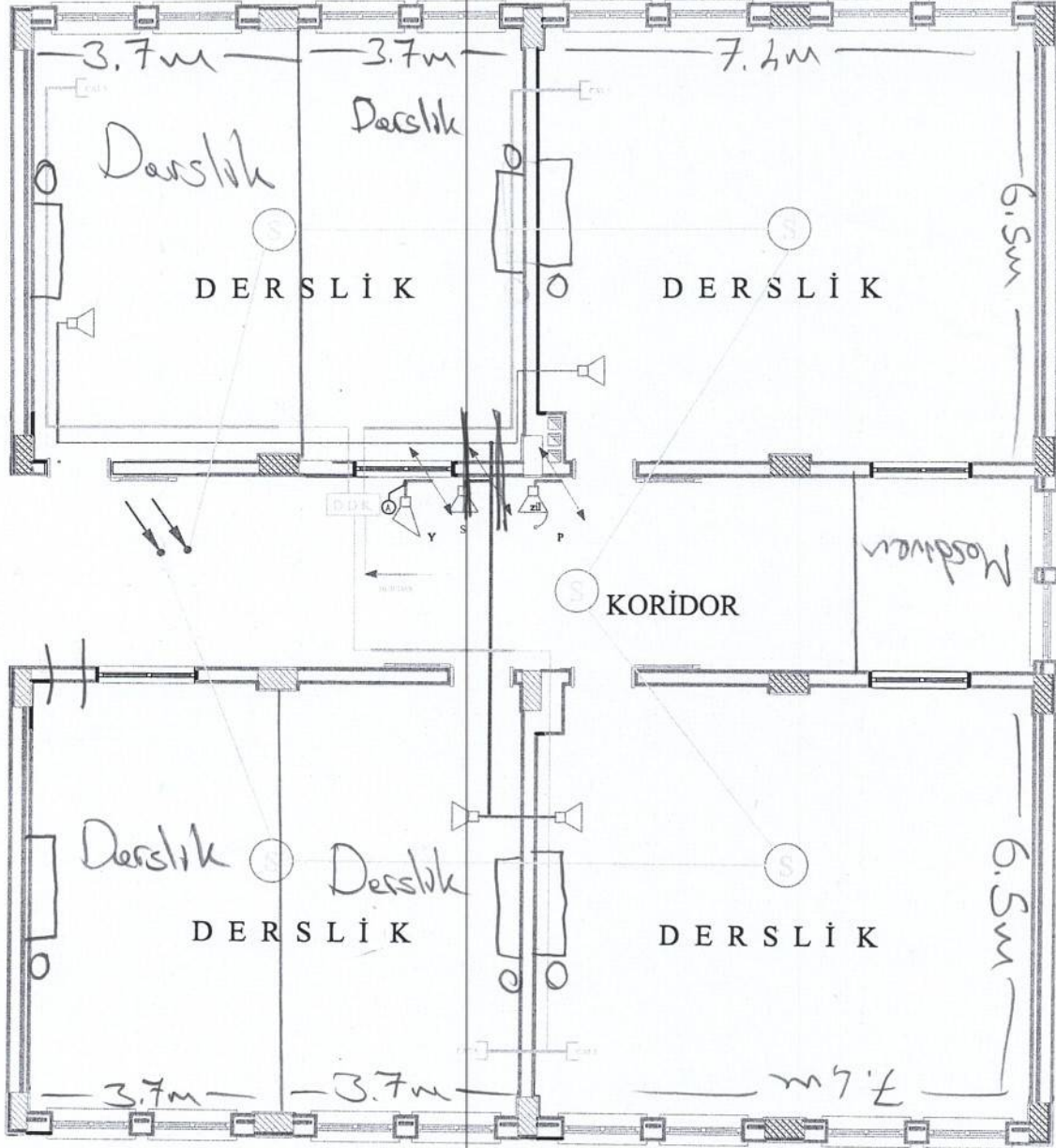
Okul boy → 17m  
Okul en → 16m



1 Mdr + Mdr Yrd. = 3  
2 Derslik = 2  
1 ögr. = 4  
3



2. KAT PLANI Ö: 1/50



6 Derslik = 6 m

